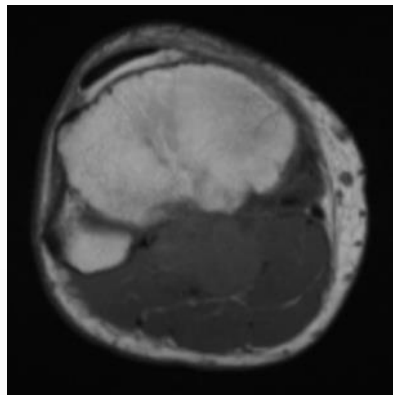




**HKU
Med**

Saturday Interhospital Meeting Clinical Pathological Conference



Two patients with Leg Mass

Date: 14 June 2025

Time: 8:30 am – 10:00 am (Online)



Division of Orthopaedic Oncology & Limb Salvage Surgery

Department of Orthopaedics and Traumatology

Queen Mary Hospital

ALL ARE WELCOME

Registration is required via the College email



Department of Orthopaedics and Traumatology, The University of Hong Kong
香港大學矯形及創傷外科學系